

Collier County Big Corkscrew Island Regional Park

Phase One Preliminary Site Plan Review

June 7, 2017



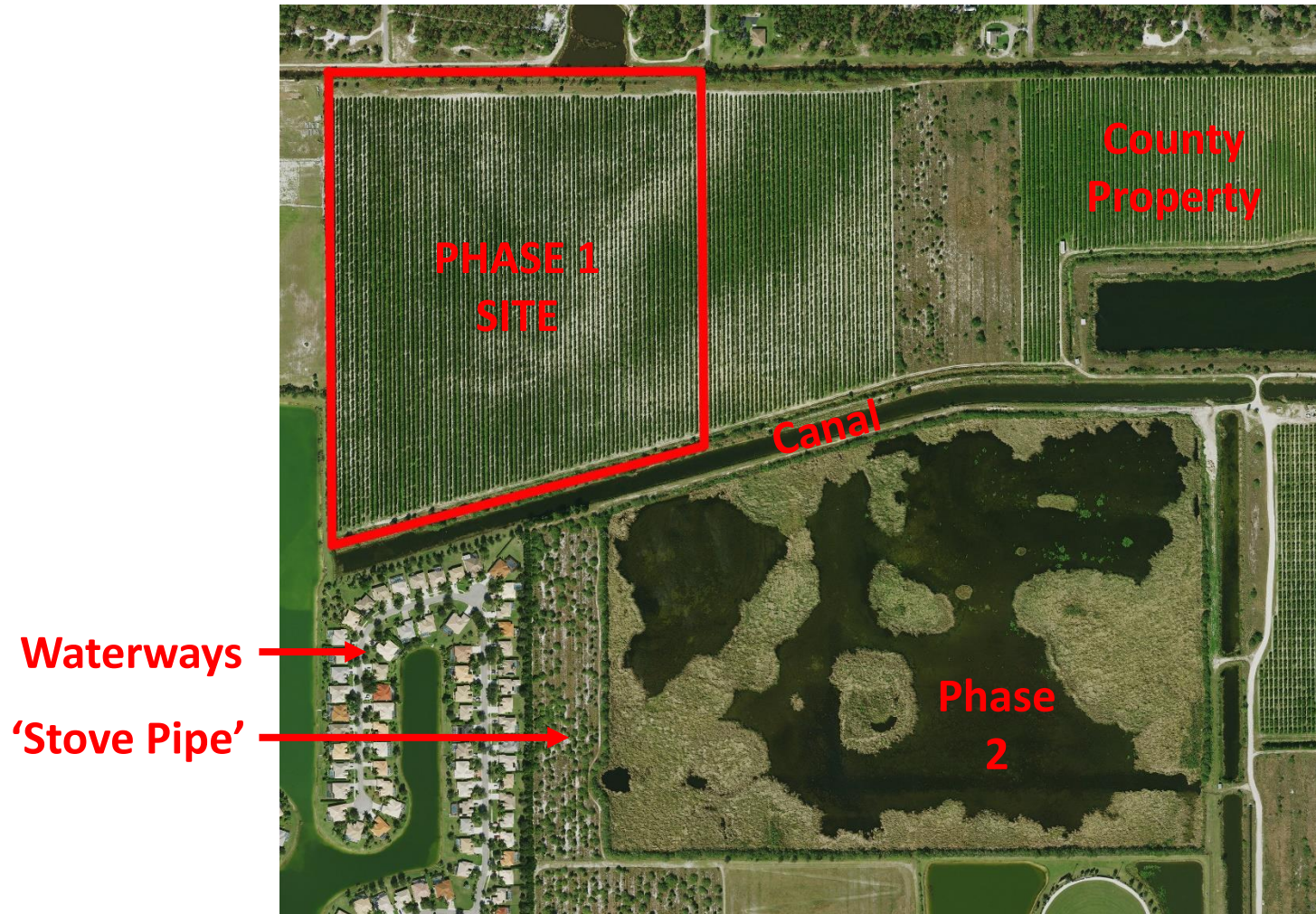
Agenda

- Project Overview:
 - Site Context, Location
 - Approved 2016 Master Plan
- Purpose of Tonight's Meeting:
 - Phase One "Program" Revisions
 - Proposed Phase 1 Preliminary Site Plan
- Questions, Comments
- Next Steps, Adjourn

Project Overview: Site Context



Project Overview: Site Location



Palmetto Ridge HS

Project Overview: Approved 2016 Master Plan



Project Overview: Approved Phase 1

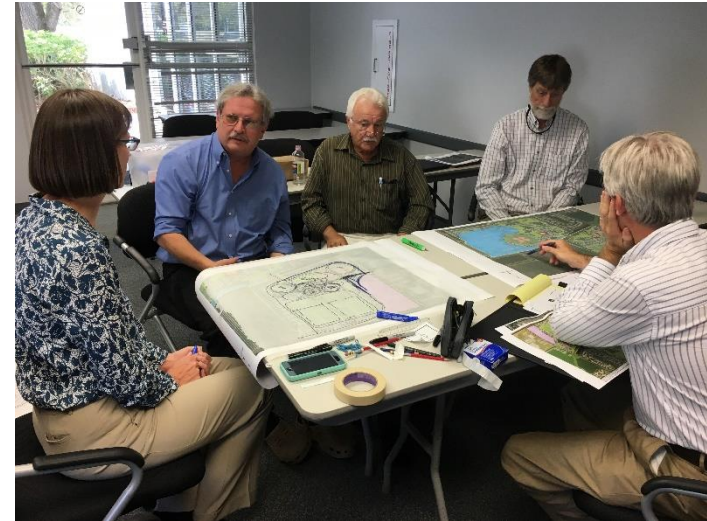


Program

- Maintenance/Service Area
- (8) 180'x300' multi-use fields, 30' apart
- (4) Tennis courts
- Pro-Shop
- (2) Basketball courts
- Dog Park
- Event Lawn with Stage
- Playground
- Splash Pad
- Community Center
- Aquatics Center
- Trails and Picnic
- Parking
- Landscape Buffer
- Roadway connection

Project Overview: Phase 1 Scope of Work

- Survey
- Preliminary Design/ Design Development
- Environmental Survey
- Phase 1 30%, 60% Design
- SFWMD, COE, SDP Permitting
- Phase 1 90%, 100% Design
- Bidding
- Construction



Phase 1 “Program” Revisions

- Provide a **public roadway** through the park
- **Enlarge multi-use fields** to accommodate competitive soccer
- **Enlarge community center** for anticipated needs
- Provide **parking closer to community center**
- **Provide a fieldhouse** (with concessions, restrooms, drinking fountains) near the soccer fields

Phase 1 Design “Guiding Principles”

- Keep program **elements in generally the same location**
- Create a greater “sense of place” including **sense of arrival and pedestrian park core**
- Provide **well distributed, adequate parking** for every activity venue
- **Minimize vehicular/ pedestrian conflicts**
- Locate **Maintenance in central area** relative to Phase 2

Preliminary Phase 1 Site Plan



Program

- Maintenance/Service Area
- (6) 225' x 360' multi-use fields, 60' apart E/W and 90' N/S
- (4) Tennis courts
- Concessions
- Restroom
- (2) Basketball courts
- Event Lawn with Stage
- Playground
- Community Center
- Aquatics Center
- Trails and Picnic
- Parking
- Landscape Buffer
- Future roadway connection

Preliminary Phase 1 Alternative Plan



Program

- Maintenance/Service Area
- (4) 180' x 300' multi-use fields, 30' apart E/W (as masterplan) and 90' N/S
- (2) Baseball Fields
- (4) Tennis courts
- Concessions
- Restroom
- (2) Basketball courts
- Event Lawn with Stage
- Playground
- Community Center
- Aquatics Center
- Trails and Picnic
- Parking
- Landscape Buffer
- Future roadway connection

Comparison between Master Plan and Phase 1 Plan



2016 Master Plan



2017 Preliminary Plan

Agenda

- Project Overview:
 - Site Context, Location
 - Approved 2016 Master Plan
 - Design and Construction Schedule
- Purpose of Tonight's Meeting:
 - Phase One "Program" Revisions
 - Proposed Phase 1 Preliminary Site Plan
- Questions, Comments?



Agenda

- Project Overview:
 - Site Context, Location
 - Approved 2016 Master Plan
 - Design and Construction Schedule
- Purpose of Tonight's Meeting:
 - Phase One "Program" Revisions
 - Proposed Phase 1 Preliminary Site Plan
- Questions, Comments
- Next Steps, Adjourn

Thank you very much for participating in the design of this important project!

